

R15 Plug-in Power Relays Tube Base Style

The Relpol R15 General Purpose Plug-in Power Relays offer high reliability and ruggedness in a full featured model design. This line of plug-in devices is well suited for the traditional tube base market. This is widely used in the industry where a dependable low cost control relay is required.

Designed for traditional applications

The R15 plug-in power relay is rated at 10 amps resistive @250VAC and is available in a 2PDT (2 form-C contacts) and 3PDT (3 form-C contacts) contact arrangement. The two pole and three pole relays are housed in traditional 8 pin and 11 pin designs.

The relay contact materials are cadmium-free and are made of highly reliable silver nickel (AgNi) which can perform to currents as low as 5mA@5V. The R15 relays are available in ten coil voltages from 6V DC to 110V DC and 6V AC to 240V AC.

Rugged and reliable

The R15 plug-in power relays provide long lasting high quality contact reliability even after millions of operations, due to their hard silver contacts with a mechanical life of 20 million cycles, and high contact switching capacity.

Convenient features

All R15 plug-in power relays feature a mechanical “flag” and a one piece “push-to-test button/latching” lever. The “push-to-test” button permits a momentary testing of the relay contacts. The “latching” lever allows the relay contacts to remain closed for longer testing periods until released back to normal. These standard features save time and labor when troubleshooting control circuitry.

A LED position indicator shows whether the relay is energized and the contacts have changed over is available as standard.

DIN-rail mounted relay sockets

The PZ relay sockets offer a unique look in an IEC slim design style. The sockets can be DIN-mounted or screwed directly onto the panel. The socket terminals are fully opened and pin numbers are clearly identified. The relays are easily secured and fastened to the relay sockets. For high vibration applications, optional retainer clips are available to firmly hold the relays to the socket base.

Safety Approvals

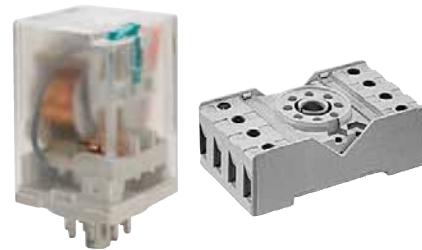
The R15 plug-in power relays are UL recognized, CSA certified, VDE certified and CE marked which meets the requirements of all important international approval organizations, making them ideal for use in both domestic and export equipment.



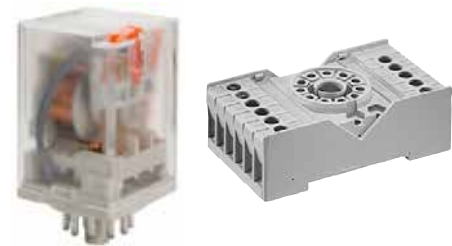
R15 2PDT 8-Pin Relay



R15 3PDT 11-Pin Relay




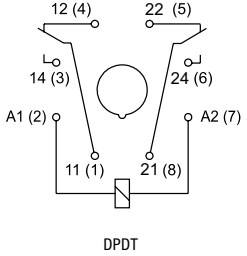
R15 2PDT relay and PZ8 socket




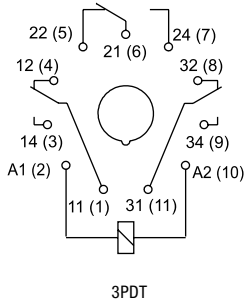
R15 3PDT relay and PZ11 socket



Plug-in Relays 2 Pole (Form C) - Tube Base 8-Pin Type ❶

R15 Relay	Description	Position Indication	Diagram (pin side view)	Coil Voltage	Catalog Number	Pkg Qty
	10A DPDT 2 Pole (2 Form C) AgNi Contacts Features: Push-to-test/ Latching Lever as standard Built-in LED Bi-polar input for DC versions	Indicating Flag Electrical LED		6VDC	R15-2012-23-1006-WTL	10
				12VDC	R15-2012-23-1012-WTL	
				24VDC	R15-2012-23-1024-WTL	
				48VDC	R15-2012-23-1048-WTL	
				110VDC	R15-2012-23-1110-WTL	
				6VAC	R15-2012-23-5006-WTL	
				12VAC	R15-2012-23-5012-WTL	
				24VAC	R15-2012-23-5024-WTL	
				120VAC	R15-2012-23-5120-WTL	
				240VAC	R15-2012-23-5240-WTL	



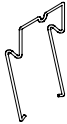
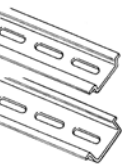
Plug-in Relays 3 Pole (Form C) - Tube Base 11-Pin Type ❶

R15 Relay	Description	Position Indication	Diagram (pin side view)	Coil Voltage	Catalog Number	Pkg Qty
	10A 3PDT 3 Pole (3 Form C) AgNi Contacts Features: Push-to-test/ Latching Lever as standard Built-in LED Bi-polar input for DC versions	Indicating Flag Electrical LED		6VDC	R15-2013-23-1006-WTL	10
				12VDC	R15-2013-23-1012-WTL	
				24VDC	R15-2013-23-1024-WTL	
				48VDC	R15-2013-23-1048-WTL	
				110VDC	R15-2013-23-1110-WTL	
				6VAC	R15-2013-23-5006-WTL	
				12VAC	R15-2013-23-5012-WTL	
				24VAC	R15-2013-23-5024-WTL	
				120VAC	R15-2013-23-5120-WTL	
				240VAC	R15-2013-23-5240-WTL	

G
 Relpol Control Relays

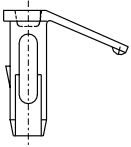
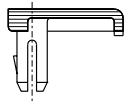
❶ The standard features of “Push-to-test/Latching” lever can be easily removed and plugged with an accessory plug or push-to-test button. See installation guide and accessory plugs/push-to-test buttons on page G49.

Accessories

Accessory	Description	Catalog Number	Pkg Qty
	Screw Terminal, Relpol Tube Base 8-PIN Socket for R15 relays - Panel or DIN-rail mounting - 10A, 250V rating, UR, CSA	PZ8	10
	Screw Terminal, Relpol Tube Base 11-PIN Socket for R15 relays - Panel or DIN-rail mounting - 10A, 250V rating, UR, CSA	PZ11	10
	Retainer clip for PZ8 & PZ11 tube base relay sockets	PZ110031	25
	DIN-rail - 2 meter lengths (6' 6") Top Hat, low profile Top Hat, high profile	3F 3AF	20 12

G
Relpol Control Relays

Accessories

Accessory	Description	Catalog Number	Pkg Qty
	P-Type button (push-to-test button) ❶ See application details below. For R15 Relays with AC Coils (orange button) For R15 Relays with DC Coils (green button)	PR15WTAC PR15WTDC	100
	Relay hole plug. Plugs the hole when the T or P type inserts ❶ are removed. See installation details below. For R15 Relays with AC Coils (orange button) For R15 Relays with DC Coils (green button)	R15WTAC R15WTDC	100

Plug & P-type button (Push-to-test) for R15 Relays

The R15 relays are equipped with a one-piece “T” insert that functions either as Push-to-test button or Latching of the relay contacts as standard. The “T” insert can be easily removed and replaced with an accessory Plug for applications that can not include these additional standard features.

The accessory P-Type button (Push-to-test) is recommended for applications that only require manual contact closure for control circuit testing. By manually pressing the P-Type button, the relay contacts change state for as long as the P-Type button is pressed. Contacts return to the initial position as soon as pressure is released from the P-Type button. This operation can be done while the coil is de-energized. The standard “T” insert can be easily removed and replaced with a P-Type button as shown.



Remove the standard “T” plastic insert with a small screwdriver as shown



Insert the P-Type button or Plug as shown and snap down into place

❶ Minimum order quantity is one package of 100. Price each x 100 = total price.