

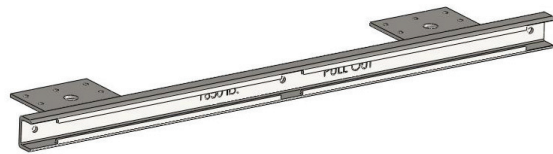
Wall Inserts

Description

Wurtec's new insert has been designed specifically for the elevator industry. It's low profile allows it to be mounted easily on wood walls with drywall finish, embedded in block/concrete, or surface mounted wherever required. The standard hex head of a 5/8 bolt can be inserted into the channel at the notches provided. Once in the insert, the bolt will not turn.

Key Features

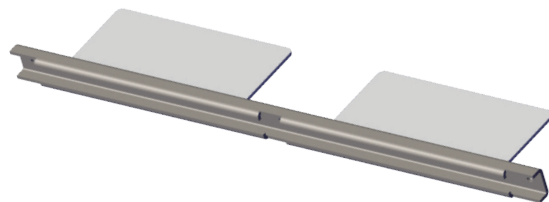
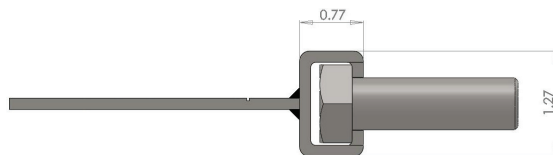
- **Made in the USA**
- Rated
- Designed for Elevator Industry
- No Special Hardware Required
- Painted Black
- Optional cover provided to prevent insert from filling with concrete
- Custom mounting brackets available



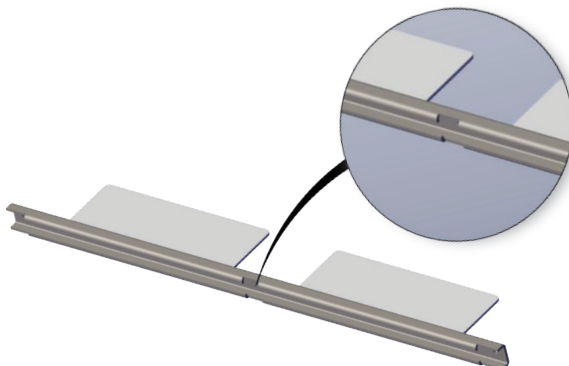
Part No. 20-200-15 thru 20-200-30



Part No. 20-200-36 thru 20-200-42



Part No. 20-200-24-4W thru 20-200-30-8W



| Part No. | Length (In.) | Pull Out * | Shear * | Weight (lbs) |
|--------------|---|------------|---------|--------------|
| 20-200-15 | 15" | 1650 lb | 1650 lb | 2.45 |
| 20-200-24 | 24" | 1650 lb | 1650 lb | 3.42 |
| 20-200-30 | 30" | 1650 lb | 1650 lb | 4.05 |
| 20-200-36 | 36" | 1650 lb | 1650 lb | 4.71 |
| 20-200-15-CK | Concrete Installation Kit. Includes 2 anchor bars and a insert that is protected from filling up with concrete. 15" - 30" | | | |
| 20-200-24-CK | | | | |
| 20-200-36-CK | Concrete Installation Kit. Includes 3 anchor bars and a insert that is protected from filling up with concrete. | | | |

* Loads must be applied no more than 1" from outside edge of mounting plates to achieve stated rating.

This version of the wall insert comes **without** mounting brackets and is designed to be welded directly to the steel structure of the hoistway.

| Part No. | Length (In.) | Pull Out** | Shear** | Weight (lbs) |
|------------|---|------------|---------|--------------|
| 20-200-15P | 15" | 1650 lb | 1650 lb | 1.55 |
| 20-200-24P | 24" | 1650 lb | 1650 lb | 2.52 |
| 20-200-30P | 30" | 1650 lb | 1650 lb | 3.16 |
| 20-200-36P | 36" | 1650 lb | 1650 lb | 3.80 |
| 20-200-02 | Concrete Installation Kit for Block Wall 15" - 30" (No Foam). | | | |
| 20-200-07 | Concrete Installation Kit for Block Wall 36" (No Foam). | | | |

**Loads must be placed no more than 1" outside of last weld to achieve stated rating.

This version of the wall insert is manufactured to accept 4", 6", or 8" beams for welding inserts

| Part No. | Length (In.) | Pull Out** | Shear** | Weight (lbs) |
|--------------|--------------|------------|---------|--------------|
| 20-200-24-4W | 24" | 1650 lb | 1650 lb | 4.51 |
| 20-200-24-6W | 24" | 1650 lb | 1650 lb | 4.25 |
| 20-200-24-8W | 24" | 1650 lb | 1650 lb | 3.98 |
| 20-200-30-4W | 30" | 1650 lb | 1650 lb | 5.67 |
| 20-200-30-6W | 30" | 1650 lb | 1650 lb | 5.40 |
| 20-200-30-8W | 30" | 1650 lb. | 1650 lb | 5.13 |