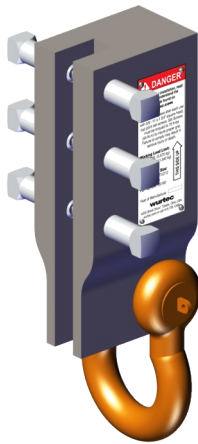


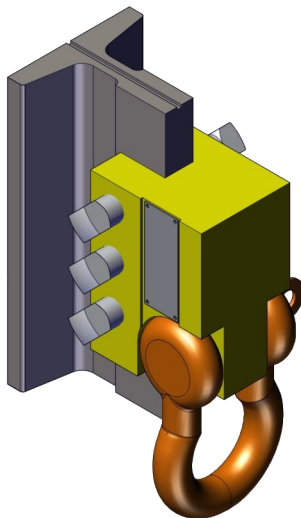
RAIL BLOCKS



Part No. 11-180



Part No. 11-190



Part No. 70-10001612

Product Description

Use Wurtec's **Rail Blocks** to rest your car or counterweight frame at any location in the hoistway. Rail Blocks must be used in pairs.

Standard Rail Blocks

These blocks are designed for a large load to rest on top. A common use is to rest a car on them. They should be oriented with the larger face pointing upwards.

Rail Blocks w/ Clevis

These blocks are intended to have all their load applied to the shackle. Loads are to be applied with fifteen degrees of a true vertical load. These should be oriented so that the shackle hangs downward the hoistway.

Type	Part No.	Rail Blade Width (in • mm)	Weight (lb • kg)	WLL (lb • kg)
Standard Rail Blocks	11-180	5/8 • 16	10.4 • 4.7	25000 • 11340
	11-181	3/4 • 19	15.6 • 7	25000 • 11340
	11-183	1-1/8 to 1-1/4 • 29 to 32	17.2 • 7.8	25000 • 11340
Rail Blocks w/ Clevis	11-190	5/8 • 16	17.3 • 7.9	25000 • 11340
	11-190-M	5/8 • 16	20.2 • 9.2	25000 • 11340
	11-191	3/4 • 19	33.3 • 15.1	25000 • 11340
	11-191-M	3/4 • 19	28.5 • 12.9	25000 • 11340
	11-193	1-1/8 to 1-1/4 • 29 to 32	33.7 • 15.3	25000 • 11340
	11-193-M	1-1/8 to 1-1/4 • 29 to 32	28.5 • 12.9	25000 • 11340
Heavy Duty Rail Blocks w/ Clevis	70-10002008	5/16 to 3/8 • 8 to 10	14 • 6.4	14000 • 6350
	70-10008459	3/4 • 19	35.7 • 16.2	35000 • 15875
	70-10001612	1-1/8 to 1-1/4 • 29 to 32	41.4 • 18.8	35000 • 15875
Replacement Bolts		Size	Length (in)	
Square Head Set Screw	26160	5/8"-11	1-3/4	
	26256	1"-8	2	
Drive Impact Sockets		Description		
PRO-7420S		1/2" Socket, 5/8", 8-Point		
PRO-7432S		1/2" Socket, 1", 8-Point, for Heavy-Duty Rail Blocks		