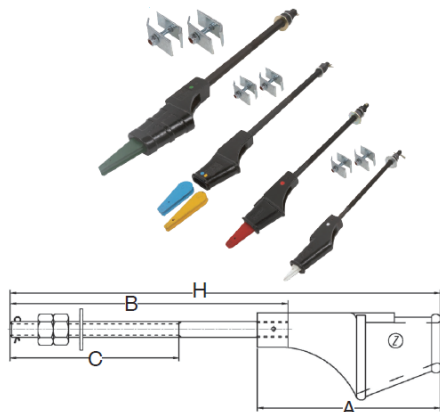


WEDGE SOCKET



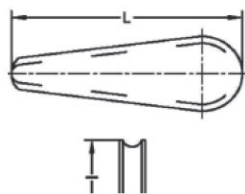
DESCRIPTION

ZZIPCO USA Standard ZZWNS Series Wedge Sockets

(shackles) are tested with traction steel elevator rope (rated one of the highest strength elevator rope in today's market) and exceed ASME A17.1S-200 Section 2.20.9.5 Safety Code. All standard wedge sockets are painted with a black body and color-coded to match each wedge color for high safety standards. All sockets come with a wedge, two rope retaining clips, a cotter pin, a washer, and two nuts as standard. Additional rod lengths are available.

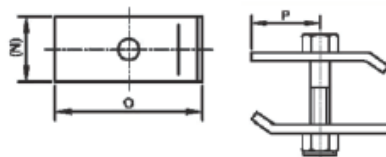
Part No.	Size	A	B	C	Nut Size	H
ZZWNS10-XX	3/8" (10 mm)	6"	12", 18", 24" (304.8 mm, 457.2 mm, 609.6 mm)	9.05"	M14	17", 23", 29"
ZZWNS13-XX	7/16"-1/2" (11-13 mm)	7.5"	12", 18", 24", 30", 36", 42" (304.8 mm, 457.2 mm, 609.6 mm, 762.0 mm, 914.4 mm, 1066.8 mm)	9.05"	M20	18", 24", 30", 36", 42"
ZZWNS16-XX	9/16"-5/8" (14-16 mm)	7.5"	12", 18", 24", 30", 36", 42" (304.8 mm, 457.2 mm, 609.6 mm, 762.0 mm, 914.4 mm, 1066.8 mm)	9.05"	M20	18", 24", 30", 36", 42"

Wedge Insert



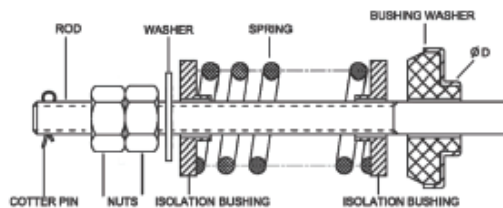
Part No.	Size	L	I	Color
ZZWW10	3/8" (10 mm)	3.75"	1.3"	Red
ZZWW13	7/16"-1/2" (11-13 mm)	4"	1.6"	Blue
ZZWW16	9/16"-5/8" (14-16 mm)	4.7"	1.3"	Yellow

Retaining Clip



Part No.	Size	N	O	P	Nut Size	Bolt Size
ZZWRC1316	7/16" - 5/8" (11-16 mm)	1"	1.84"	0.94"	M6	M6 x 35 mm

Spring Bushing Assembly



Part No.	Size	OD
ZZWS10	3/8" (10 mm)	1"
ZZWS13	7/16"-1/2" (11-13 mm)	1-1/16"
ZZWS16	9/16"-5/8" (14-16 mm)	1"