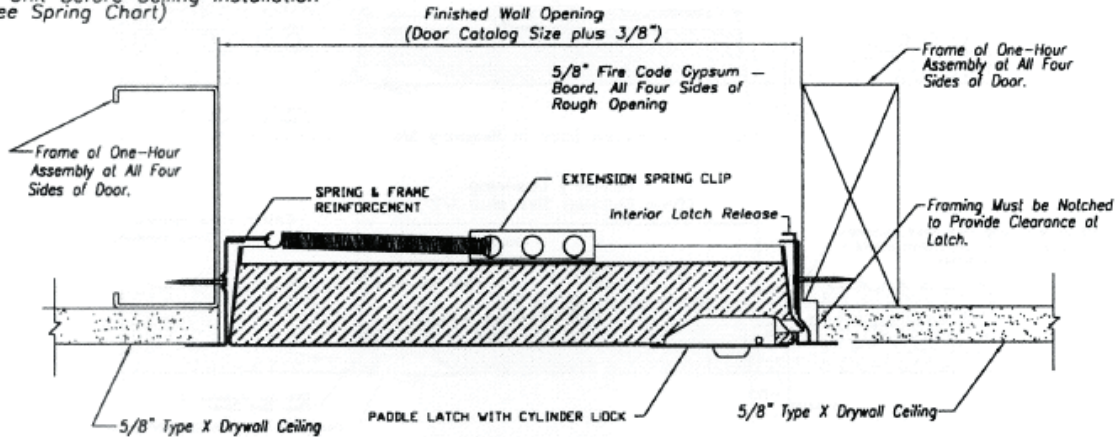


## Access Doors

### Ceiling Installation Details

**CAUTION:** Provided Springs Must Be Installed To Unit Before Ceiling Installation (See Spring Chart)



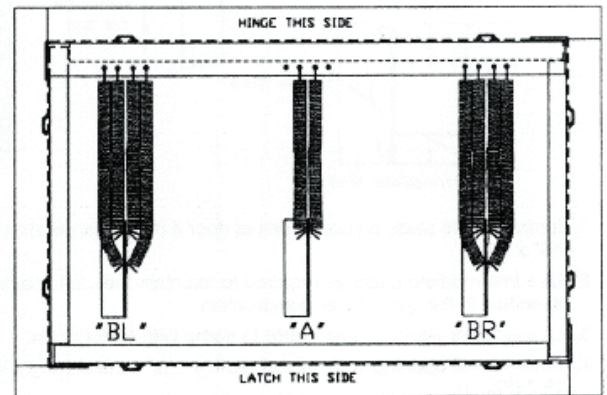
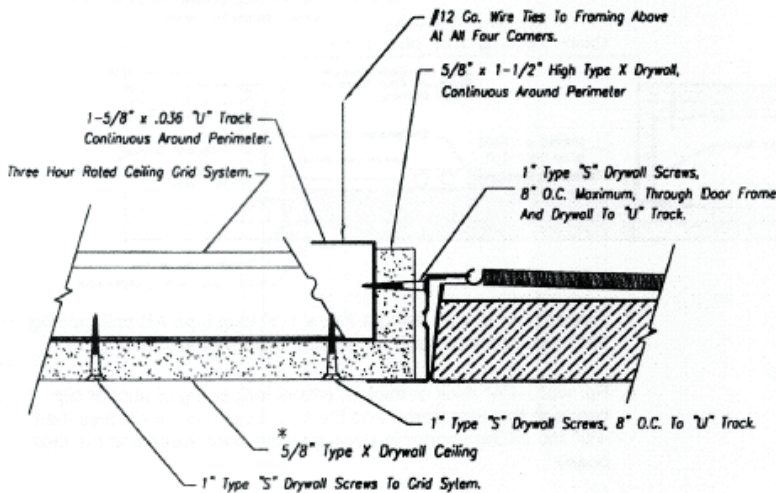
NOTE: Doors installed in a one-hour system are screw attached to the ceiling system and framing attached to the structure above with suspension wires at all four corners.

### Spring Chart

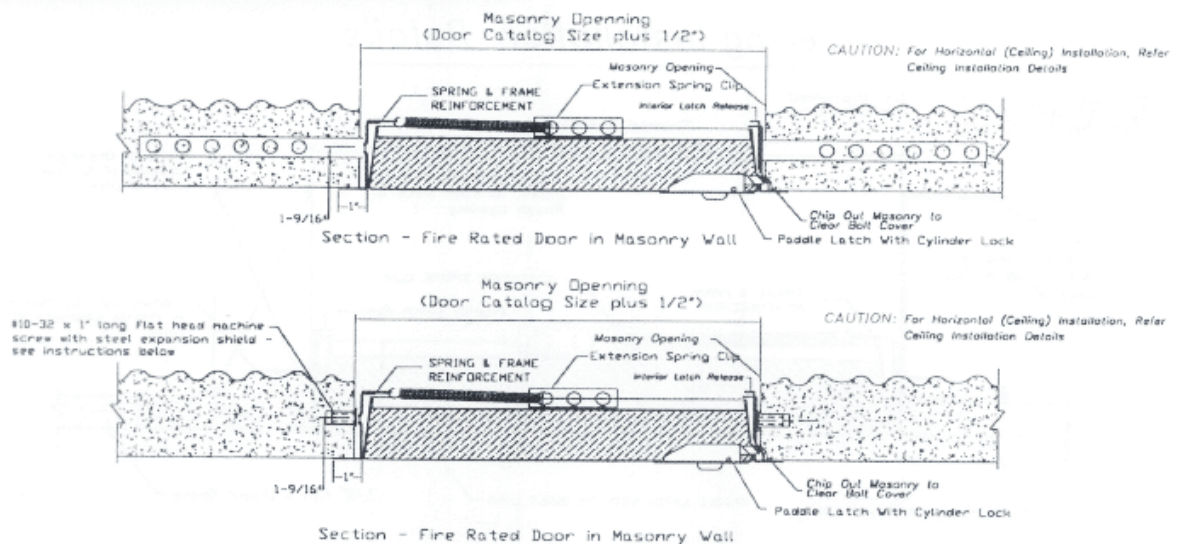
Door size	Ceiling Opening	Quantity of Springs	Location of Springs
12 x 12	12-1/2" x 12-1/2"	2	2 @ "A"
14 x 14	14-1/2" x 14-1/2"	2	2 @ "A"
16 x 16	16-1/2" x 16-1/2"	2	2 @ "A"
18 x 18	18-1/2" x 18-1/2"	2	2 @ "A"
12 x 24	12-1/2" x 24-1/2"	2	2 @ "A"
24 x 24	24-1/2" x 24-1/2"	5	1 @ "A", 2 @ "BL", 2 @ "BR"
22 x 30	22-1/2" x 30-1/2"	5	1 @ "A", 2 @ "BL", 2 @ "BR"
24 x 30	24-1/2" x 30-1/2"	5	1 @ "A", 2 @ "BL", 2 @ "BR"
22 x 36	22-1/2" x 36-1/2"	5	1 @ "A", 2 @ "BL", 2 @ "BR"
24 x 36	24-1/2" x 36-1/2"	5	1 @ "A", 2 @ "BL", 2 @ "BR"

### Installation Details

Alternate Installation For Up To And Including Three Hour Rated Non-Combustible Ceiling Systems.



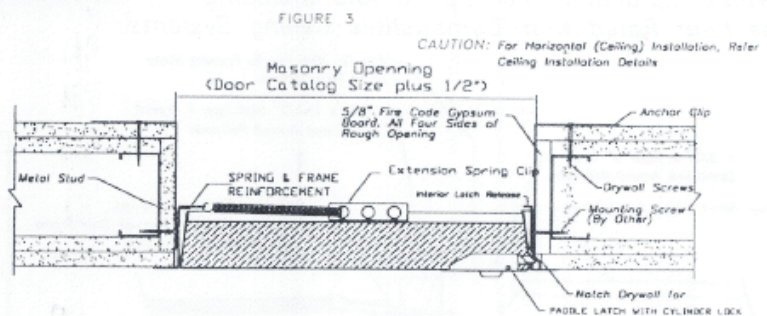
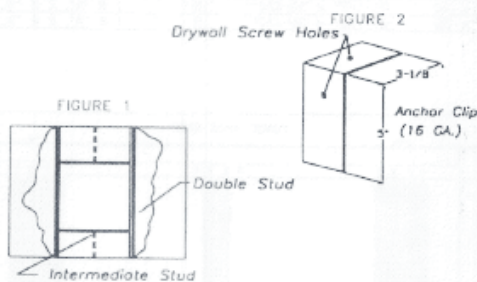
## A. MASONRY WALLS



- Opening should be planned with dimensions  $\frac{1}{2}$ " larger than catalog size of door; i.e., for a 12" x 12" door, opening should be 12 $\frac{1}{2}$ " x 12 $\frac{1}{2}$ ". (A notched-out area 2 $\frac{1}{4}$ " long x 7/8" wide x  $\frac{1}{2}$ " deep is required for the lock bolt cover.)
- If wall is under construction at time door is being installed, masonry anchors (unvolved from frame) will serve for attachment.
- If wall is already in place, position door in opening provided for it and mark location of attachments on wall using holes in latch and hinge sides of door frame as marking guides.
- Remove door and install expansion shields in wall at points marked – four for doors 36" x 36" or smaller; six for larger size doors.
- Place door in position (leaving masonry anchors flat against frame) and attach with # 10-32 x 1" long flat-head steel machine screws or equivalent.
- Check door panel for freedom of movement. If it binds, shim to remove any racking of frame at attachments to masonry.

*Suggestion: Use mortar between frame of door and block wall to provide a complete closure around frame of door.*

## B. STUD WALLS



- Install double studs on both sides of door if door is larger than 16" x 16".
- Use intermediate studs as required to maintain the stud spacing specified in the type of wall construction.
- Use industry standard procedure to frame with metal studs.
- Framed wall opening is the panel width +  $\frac{1}{8}$ " x panel height +  $\frac{1}{8}$ " (Fig. 1).
- Finished wall opening is the panel width +  $\frac{3}{8}$ " x panel height +  $\frac{1}{8}$ " (Fig. 3).
- Use anchor clips for mounting door to wall. Locate a pilot hole (#21 or  $\frac{3}{32}$  drill bit) by lining up the anchor clip with the mounting hole (Fig. 2).
- Fasten door to wall using a #12 x  $\frac{1}{2}$ " long type AB self-tapping flat head screw through the anchor clip into the stud (Fig. 3).
- For walls  $\frac{1}{2}$ " thick or thicker, mount longer leg of anchor clip between the door frame and the face board. For walls less than  $\frac{1}{2}$ " mount the shorter leg between the door frame and the face board.
- Use drywall screw min.  $\frac{1}{4}$ " long through hole provided in anchor clip and into the stud (only one hole used) (Figs. 2 and 3).
- Use shims where necessary to insure the door is square and