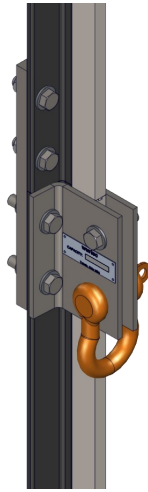


## RAIL MOUNT HOIST



**Part No. 11-17X**

Part No.	Weight (lb/kg)	Rail Size (ISO)	Rail Size (lb)	Capacity (lb/kg)
<b>11-174</b>	7.5/3	T89	8	15,000/6803
<b>11-175</b>	11/4	T127-2	15	15,000/6803
<b>11-176</b>	14/6	T127-1	12	15,000/6803
<b>11-177</b>	20/9	T140-1	18	15,000/6803
<b>11-178</b>	23/10	T140-2	22.5	15,000/6803
<b>11-179</b>	25/11	T140-3	30	15,000/6803

### Product Description

The **Rail Mount Hoist** bolts through the existing fish plate holes for secure, no slip fastening. Great for hoisting cars and counterweight frames. Maximum capacity is 15,000 lb (6803 kg) per pair.

### **WARNING**

**Must be used in pairs. Follow instructions. Failure to comply may result in serious injury or death.**

### Instructions

- Utilize the top four holes in fishplate to install hoisting brackets.
- Remove only two fishplate bolts on one side of the guide rail blade at one time. This keeps the guide rail system secure during the installation.
- Ensure that the angle bracket is pushed flush with the long side of the rail's machined blade. Always use the grade 8 bolts provided with the lift brackets.
- Install angle bracket on other side of the rail blade. Use the shackle pin to help line up the brackets.
- Bolt through brackets at the slot provided above the shackle. **DO NOT OVER TIGHTEN THIS BOLT AND BEND THE BRACKETS.**
- Shackle loads should be straight down along the guide rail.
- Make sure the load being lifted is evenly distributed between the two guide rails. If load is uneven it could rack the carframe and overload of the brackets.