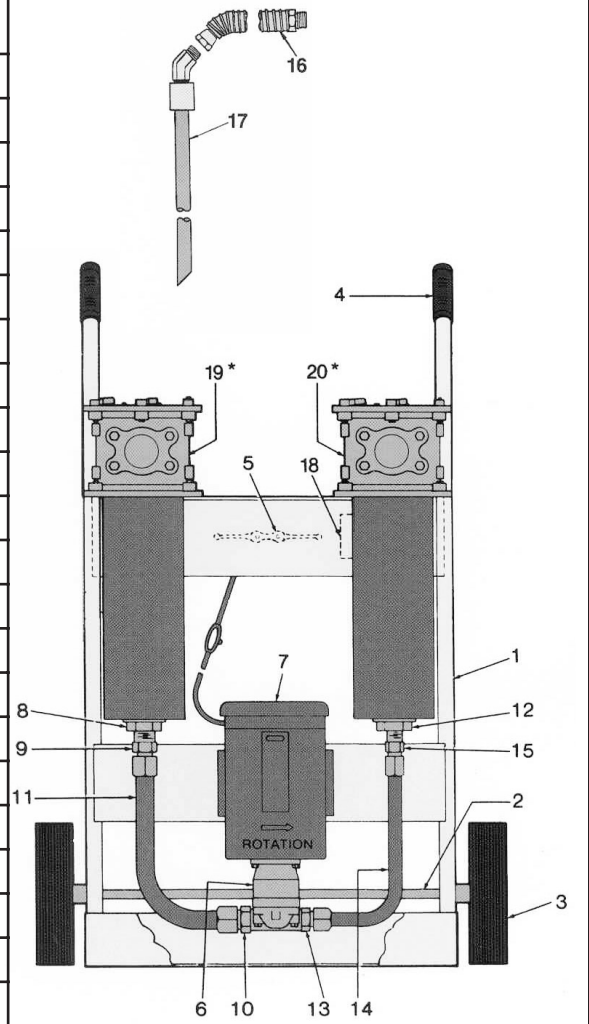


HYDRAULIC TOOLS

PORTABLE FILTER CARTS - FILTER CART REPLACEMENT PARTS

ITEM NUMBER	CATALOG NUMBER	DESCRIPTION
1	928690	FRAME
2	928653	AXLE
3	928650	WHEEL
4	928651	HANDLE GRIP
5	928649	CORD CLEAT
OPT. 5	928623	CORD REEL
6	928731	PUMP
7	928678	MOTOR 10MF
8	928748	PIPE REDUCER
9	928728	TUBE FITTING
10	928652	ADAPTER FITTING
11	928677	SUCTION TUBE ASSEMBLY
12	928749	PIPE REDUCER
13	928729	ADAPTER FITTING
14	928676	DISCHARGE TUBE ASSEMBLY
15	928727	TUBE FITTING
16	928663	HOSE ASSY. - BUNA N
17	928784	TUBE WAND ASSY. BUNA N
17	928620	TUBE WAND ASSY. VITON
18	932187	NAME PLATE
19*	RF2-1**PP3-YN-F9-1	INLET FILTER - BUNA N
20*	CF2-1**-MP25-F9-YN-1	OUTLET FILTER - BUNA N



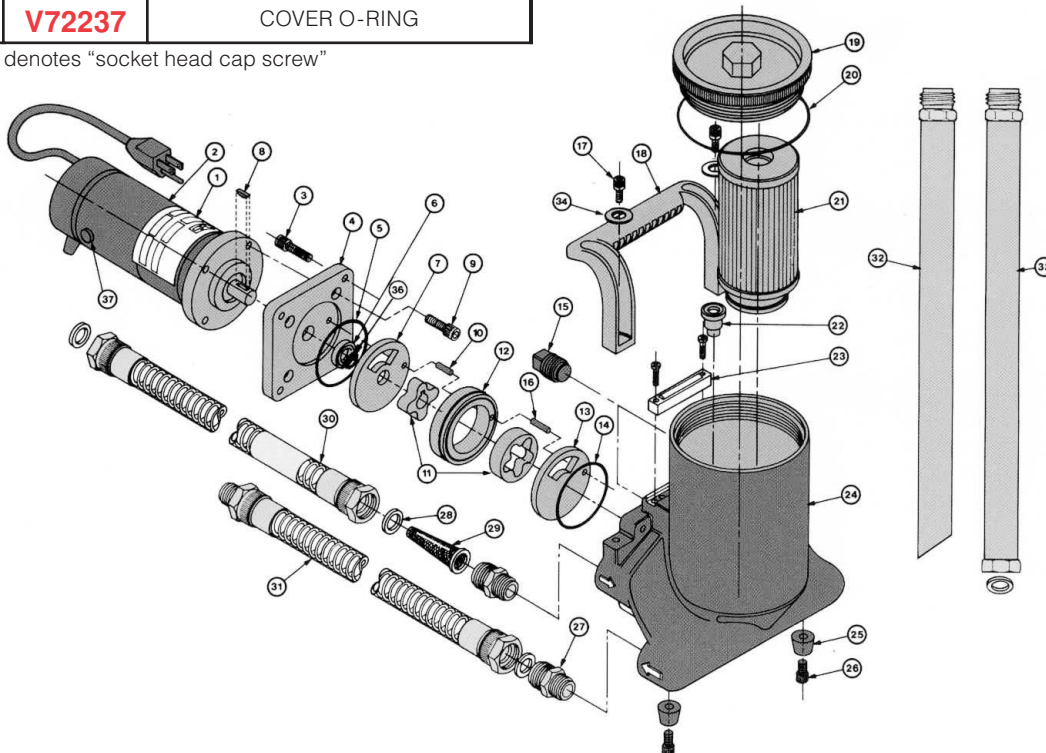
TECHNICAL REFERENCE

HYDRAULIC TOOLS

PORTABLE FILTRATION SYSTEM - REPLACEMENT PARTS

ITEM NUMBER	CATALOG NUMBER	DESCRIPTION	ITEM NUMBER	CATALOG NUMBER	DESCRIPTION
2	931913	MOTOR, 110-120 VAC	21		ELEMENT
	932381	MOTOR, 220-440 VAC	22	928981	RELIEF VALVE
	932759	MOTOR, 24 VDC	23	927422	INDICATOR KIT
3	902734	SHCS (4), 1/4 - 20 X 1	24	931838	HOUSING
4	931890	ADAPTER PLATE	25	931888	RUBBER BUMPERS (2)
5	V72041	HOUSING O-RING	26	902907	SHCS (2) 1/4 - 20 X 1/2
6	931921	POLYPAK SEAL	27	931928	BRASS FITTING (2)
7	931899	SHADOW PLATE	28	931956	GASKET (4)
8	931877	WOODRUFF KEY 1/8 X 3/8	29	931927	INLET SCREEN
9	902679	SHCS (4), 1/4 - 20 X 3/4	30	931936	INLET HOSE ASSEMBLY
10	903630	ROLL PIN 1/8 X 3/4	31	931937	OUTLET HOSE ASSEMBLY
11	931873	GEROTER SET	32	931965	WAND CREVICE ASSEMBLY
12	931903	GEROTER RING	33	931966	WAND ADAPTER ASSEMBLY
13	931900	OUTLET PLATE	34	926106	WASHER (2)
14	V72135	GEROTER O-RING	35	932097	QUICK DISCONNECT KIT <i>Not shown</i>
15	931920	BRASS PIPE PLUG (2) 1/2 - 14	36	932085	WASHER
16	903426	ROLL PIN 1/8 X 5/8	37	932189	BRUSH KIT (110/120, 220/240 VAC)
17	931889	SHCS (2), 1/4 X 20 X 5/8		932761	BRUSH KIT (24 VDC)
18	931897	HANDLE		932263	SEAL KIT
19	931892	COVER		932081	BOWL EXTENSION KIT
20	V72237	COVER O-RING			

NOTE: SHCS denotes "socket head cap screw"



HYDRAULIC TOOLS

NO-OX-ID® QUANTITY FORMULA

To determine the number of gallons required to fill the annular space, you will need the following dimensions:

1. Depth of hole/casing. A (feet)
2. Diameter of hole/casing B (decimal inches)
3. Diameter of jack assembly C (decimal inches)

CALCULATION:

$$(B^2 - C^2) \times A \times 0.0408579 = \text{gallons.}$$

Divide gallons by 55 or 35 to determine how many 55 or 35 gal. Barrels are required.

TEST & MEASURE / WIRE ROPE

WIRE ROPE TENSION GAUGE, #10-650 - INSTRUCTIONS FOR ASSEMBLY & USE

Main Components:

1. Tube with Hook
2. Fulcrum with clamp
3. Scale, 0-50#, with clamp

Assembly:

Slide the Fulcrum (item 2) onto the Tube (item 1), to about nine (9) inches from the Hook (item 4). Align the Fulcrum with the Hook and gently tighten, both. Then install the Scale (item 3) at the bottom of the Tube (item 1), align with the Fulcrum (item 2) and Hook (item 4) and tighten. You may now begin checking your wire ropes.

Use:

1. Place the assembled Rope Tension Gauge on the rope about 3-4 feet above the rope shackle. See picture.
2. Adjust the Fulcrum (item 2) so the Scale (item 3) indicates approximately 25 pounds (the middle of the Scale's range). Tighten the handle.
3. Record the reading for this rope and continue doing this for the remaining ropes. If any readings fall outside the adjusted range, move the Gauge to the rope with a reading close to the middle of your range and adjust the Fulcrum (item 2), up or down to suit your new range. Record your new readings for each rope.
4. Add all of the new readings and divide the total by the number of ropes. This is the reading that all ropes should display, after re-adjustment.

