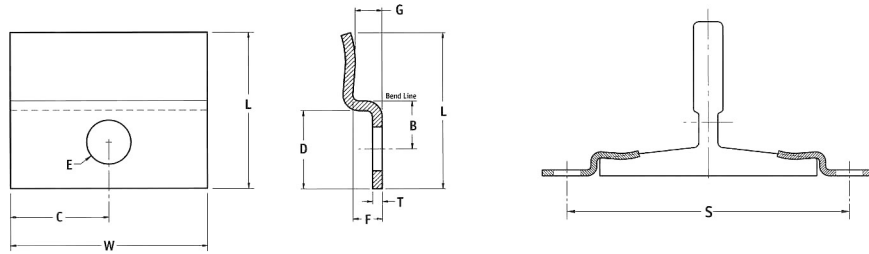


ELEVATOR COMPONENTS

SLIDING CLIPS

Pressed steel sliding guide rail clamping system. Recommended for applications where guide rail stack movement is required due to thermal expansion or building settlement.

CATALOG NUMBER	APPLICABLE RAIL SIZE	WT/PC (LBS.)	L	W	B	C	D	E	F	G	T	S (+/-0.125)
CB08-S	8#	0.20	2.000	2.500	0.531	1.250	1.000	0.563	0.375	0.281	0.125	4.56
CB12-S	11#	0.49	2.688	3.000	0.813	1.500	1.250	0.688	0.375	0.313	0.188	6.13
CB12-S	12#	0.49	2.688	3.000	0.813	1.500	1.250	0.688	0.375	0.313	0.188	6.63
CB15-S	15#	0.52	2.750	3.000	0.781	1.500	1.250	0.688	0.563	0.500	0.188	6.56
CB15-S	18.5#	0.52	2.750	3.000	0.781	1.500	1.250	0.688	0.563	0.500	0.188	7.07
CB22-S	22.5#	0.61	3.200	3.500	1.000	1.750	1.813	0.813	0.526	0.479	0.188	7.51

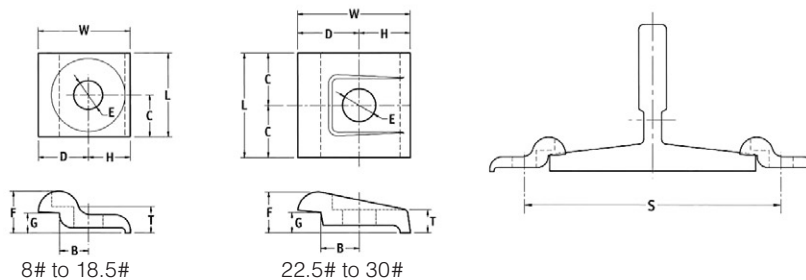


ELEVATOR COMPONENTS

FORGED CLIPS

Hot forged rigid guide rail clamping system. Recommended for applications where guide rail stack movement is not expected.

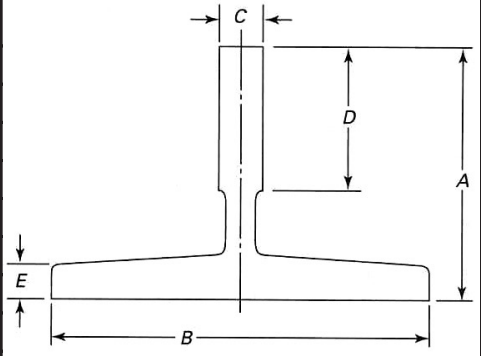
CATALOG NUMBER	APPLICABLE RAIL SIZE	WT/PC (LBS.)	L	W	B	C	D	E	F	G	H	T	S (+/-0.125)
CB08-F	8#	0.18	1.625	1.625	0.500	0.813	0.875	0.563	0.719	0.313	0.750	0.389	4.50
CB15-F	11#	0.42	2.000	2.188	0.688	1.000	1.188	0.688	1.000	0.500	1.000	0.625	5.88
CB15-F	12#	0.42	2.000	2.188	0.688	1.000	1.188	0.688	1.000	0.500	1.000	0.625	6.38
CB15-F	15#	0.42	2.000	2.188	0.688	1.000	1.188	0.688	1.000	0.500	1.000	0.625	6.38
CB15-F	18.5#	0.42	2.000	2.188	0.688	1.000	1.188	0.688	1.000	0.500	1.000	0.625	6.88
CB22-F	22.5#	0.92	2.563	2.750	0.938	1.281	1.500	0.813	1.000	0.500	1.250	0.625	7.39
CB30-F	30#	1.15	3.000	2.750	0.938	1.500	1.500	0.813	1.125	0.750	1.250	0.750	7.39



ELEVATOR COMPONENTS

T-SECTION GUIDE RAIL DIMENSIONS

NOMINAL WEIGHT (LB./FT.)	NOMINAL DIMENSIONS (IN.)				
	A	B	C	D	E
5 ³ / ₄	2 ¹¹ / ₁₆	3 ¹ / ₄	²³ / ₆₄	1	¹⁵ / ₆₄
6 ¹ / ₄	1 ¹⁵ / ₁₆	2 ³ / ₄	⁵ / ₈	1	⁵ / ₁₆
8	2 ⁷ / ₁₆	3 ¹ / ₂	⁵ / ₈	1 ¹ / ₄	⁵ / ₁₆
11	3 ¹ / ₂	4 ¹ / ₂	⁵ / ₈	1 ¹ / ₂	⁵ / ₁₆
12	3 ¹ / ₂	5	⁵ / ₈	1 ³ / ₄	⁵ / ₁₆
15	3 ¹ / ₂	5	⁵ / ₈	1 ³¹ / ₃₂	¹ / ₂
18 ¹ / ₂	4 ¹ / ₄	5 ¹ / ₂	³ / ₄	1 ³¹ / ₃₂	¹ / ₂
22 ¹ / ₂	4	5 ¹ / ₂	1 ¹ / ₈	2	⁹ / ₁₆
30	5	5 ¹ / ₂	1 ¹ / ₄	2 ¹ / ₄	¹¹ / ₁₆



ELEVATOR COMPONENTS

ASSEMBLY INSTRUCTIONS FOR WURTEC PIT LADDER

To Assemble:

1. Fasten the stiles (#20-101-02A or 03A) and rungs (#20-101-06A) together, as shown. Attach the splice plates (#20-101-01A) as required.
2. Attach the mounting brackets (#20-101-04A) to the top and bottom of the first section and fasten to the pit structure, as required, checking your dimensions for clearances, etc.
3. Continue adding and fastening the ladder sections or the handrail section, until complete, checking your clearances as you go.
4. Double-check all of your connections and fastening for tightness.
5. Assembly Hardware:
 - ¹/₂ 13 X 1 HCS
 - 33626 - ¹/₂" Lock Washer
 - 36110 - ¹/₂" - 13 Hex Nut

