

# *FALSE CAR* 1500 LB.

## Installation & Service Manual



Part No. 11-301



## ***FALSE CAR***

### **Part # 11-301**

#### **Product Description**

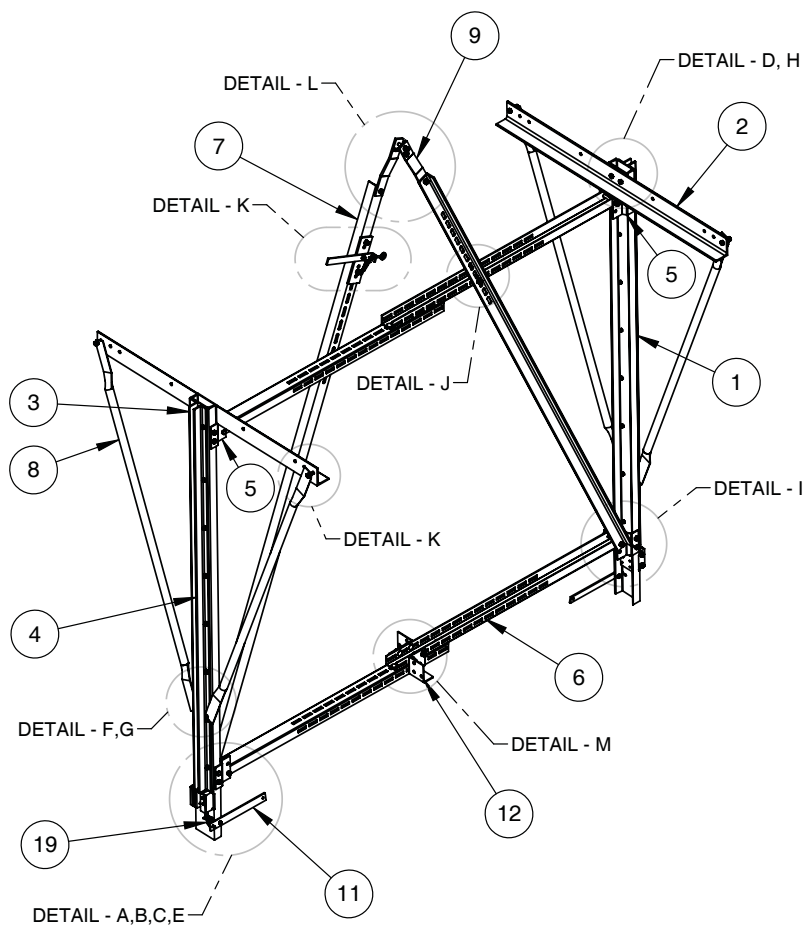
The Wurtec False Car has been designed with the user in mind. It is a flexible and easy to use false car. The false car adjusts easily to fit rail systems with DBG's of 5'-6" (MIN) to 9'-0" (MAX). It is built of lightweight aluminum for ease of handling and installation, while still providing the strength for a high capacity car. This unique false car adjusts to fit guide rail faces of 5/8", 3/4", 1 1/8" and 1 1/4".

#### **Assembly & Installation Instructions**

1. The false car is not to be used as a hoist for heavy material. The total load on the false car safety is not to exceed 1500 pounds. Remember to include the weight of the car (at 230#), your platform, canopy, wire rope climber, people, tools and miscellaneous equipment in your weight.
2. Check the false car for damage, missing parts (see pages 4 & 13), loose bolts, etc. Check the roll safeties very carefully. Make sure safety springs work and rollers rotate freely (see details on pages 5, 6, 7 & 8). Lubricate all moving parts to insure proper operation.
3. The safety spacers are factory set for 5/8" rail faces (8, 12, & 15# rails). See Page 5 for adjustments for other rail sizes. Check and tighten ALL hardware (nuts, bolts, etc.) See pages 6, 7, & 8.
4. Install the aluminum platform support angles (2) to the side stiles (1). See Page 4 and Page 8, Detail D. Make sure the bolts stick through the angle and toward the channel. Bolt the diagonal braces (8) to the side stile using the bolts provided. See Page 9, detail 3. Tighten the hardware holding the diagonal brace (8) to the platform support angle (2). See page 10 detail K.
5. If installed, remove the plumb lines from the main rails.
6. Temporarily secure the side stile assemblies to the rails and block them up so that they are level with each other.



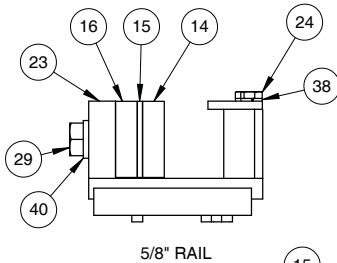
7. The fixed (4) and adjustable guide angles (3), may be shipped loosely mounted to the side stiles (1). Tighten the fixed angle hardware. Locate the adjustable angle to suit the guide rails and tighten the hardware. See Page 9, Detail H.
8. Swing the upper and lower cross channels (6, Page 4) together and fasten with the four carriage bolts (2 upper, 2 lower) provided, keeping the side stiles pressed against the guide rails.
9. Temporarily bolt the two (2) lift bars (9) together at the top hole. Attach the two (2) lift angles (7) to the upper, inside bolts (27) on the lower Zee brackets (5) and to the upper cross channels (6). See Page 10, details I & J.
10. Attach joist bracket (12) to the lower cross channels (6) as required. See Page 12. This allows you to cut a timber to provide additional support to the platform. This should be done when the DBG exceeds 7'-0".
11. String a heavy wire or cable from the Eye Bolt in the top spring loaded Safety Pawl Assy (L (24), Page 11) to the two (2) safety retraction arms (11) at the bottom of the side stiles. Double check and tighten all hardware.
12. Build a suitable platform for your car size. Make sure you securely attach your platform to the aluminum platform support angles (2).
13. Attach your hoisting device to the lift bars (9). The use of two (2) grade 5 bolts is recommended. These are not supplied with the car.
14. Remove your temporary fastenings, which were installed during step 6 to hold the side stile assemblies to the rails.
15. Install your plumb lines, raise the car and check the operation of the safety to ensure that everything is in proper working order. \*\* This Check Should Be Made Every Morning And Afternoon.\*\*
16. CAUTION- Do not attempt to release the safety when it is set. The L-Rods (19) are designed to break if the car is not raised. Always raise the car before attempting to operate the safety levers (L (24) or 11).
17. Twice daily, check the entire false car for worn or broken parts. Pay particular attention to the safety, rollers, and related parts. A log sheet should be kept recording these twice daily checks.
18. All persons entering the hoistway should wear appropriate safety gear with a lanyard that is tied off to an independent life line.
19. When using a false car, it is required that approved guardrails and toe boards be provided on your platform.



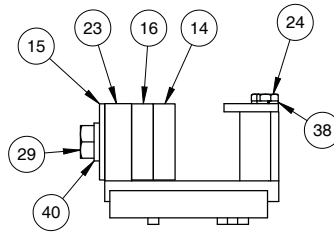
# FALSE CAR 1500 lb. Capacity



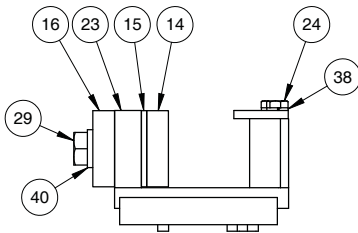
Use the following sketches to determine the correct safety block arrangement for your rail size. Note the location of the 1/8" (15) and 1/2" (16) spacers in relation to the tapped spacers (14) and each other in each case.



5/8" RAIL

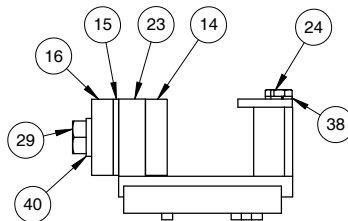


3/4" RAIL



1 1/8" RAIL

DETAIL - A

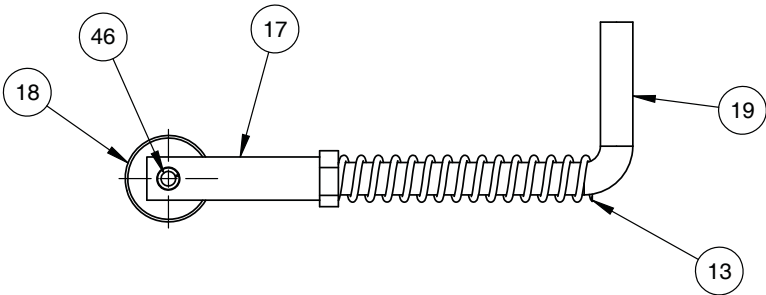
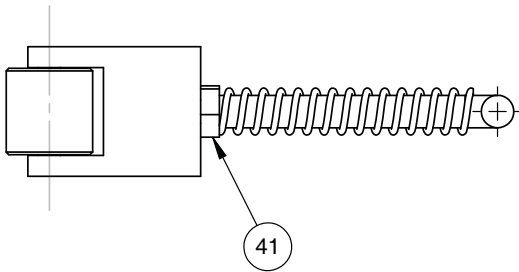


1 1/4" RAIL

# Installation & Service Manual

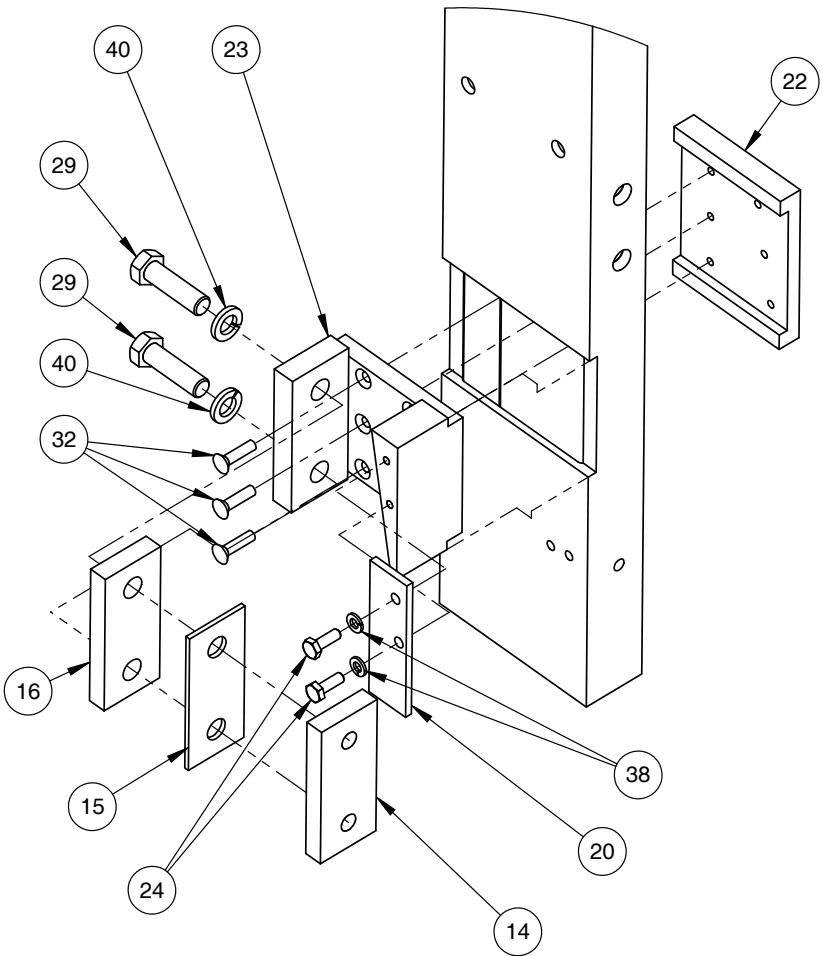


The roller assembly #11-300-25 is shipped loose. Insure that the L-rod (19) is threaded 1/2" into the fork (17). Align the L-rod (19) as shown and tighten nut (A1) against fork (17). Insert assembly into tension bracket (10) and install safety cover plate (20). See page 8, detail E. Place safety retraction arm (11) over the L-rod (19) and fasten to side stile (1). See pages 4,7 & 8.

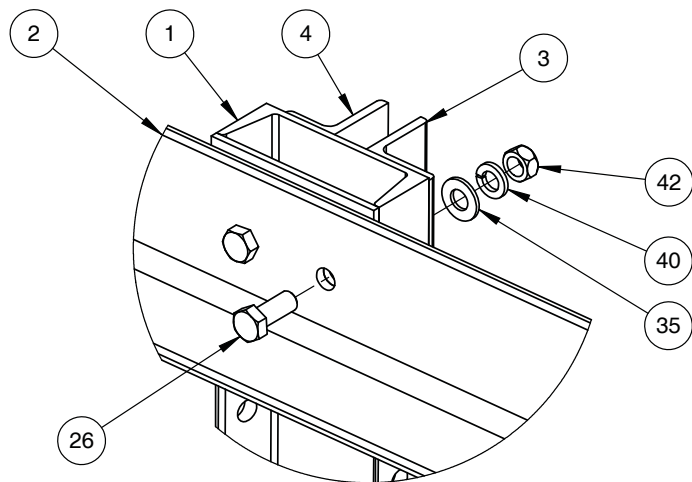


#11-300-25

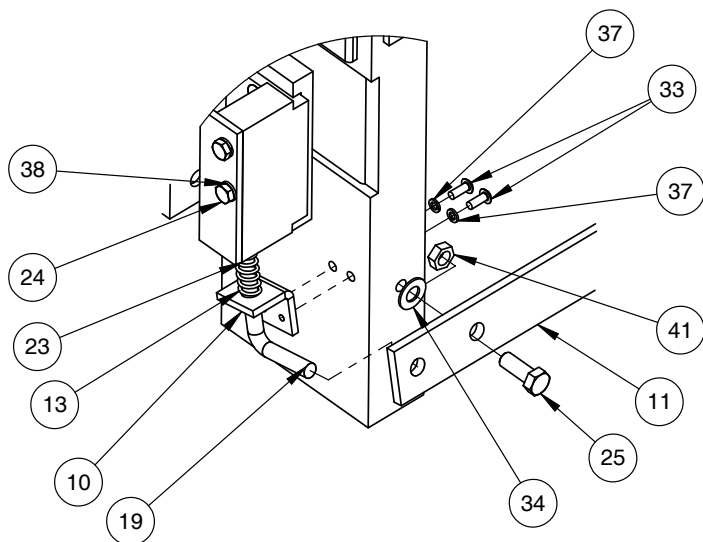
DETAIL - B



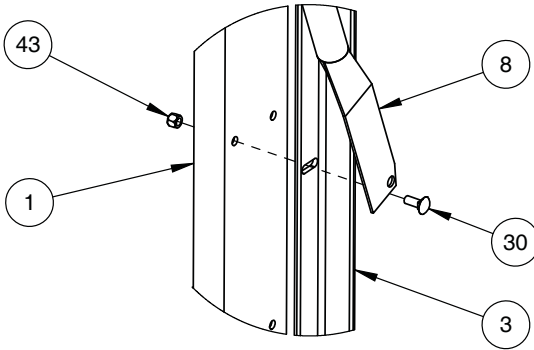
DETAIL - C



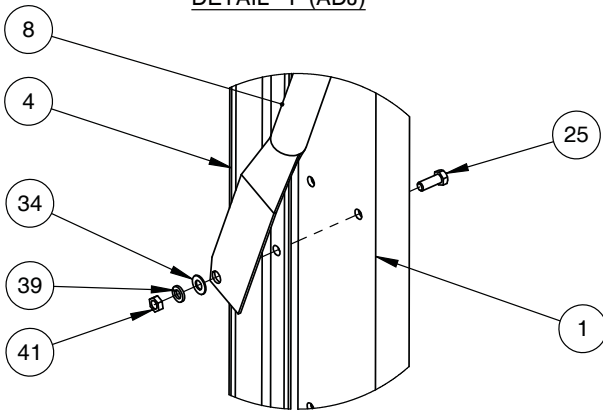
DETAIL - D



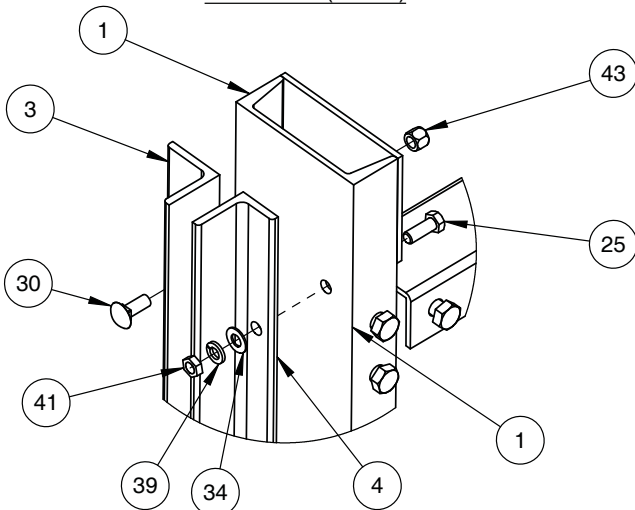
DETAIL - E



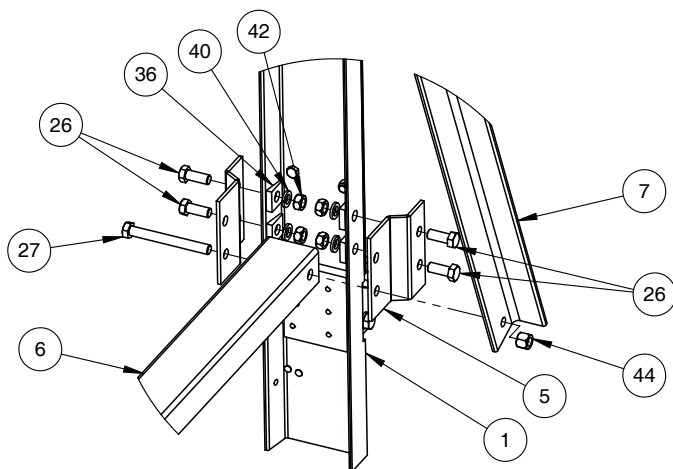
DETAIL - F (ADJ)



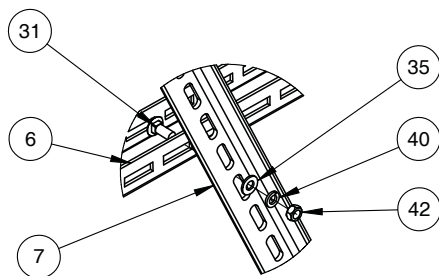
DETAIL - G (FIXED)



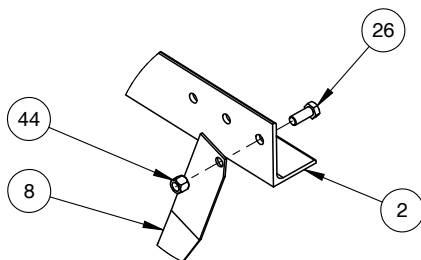
DETAIL - H



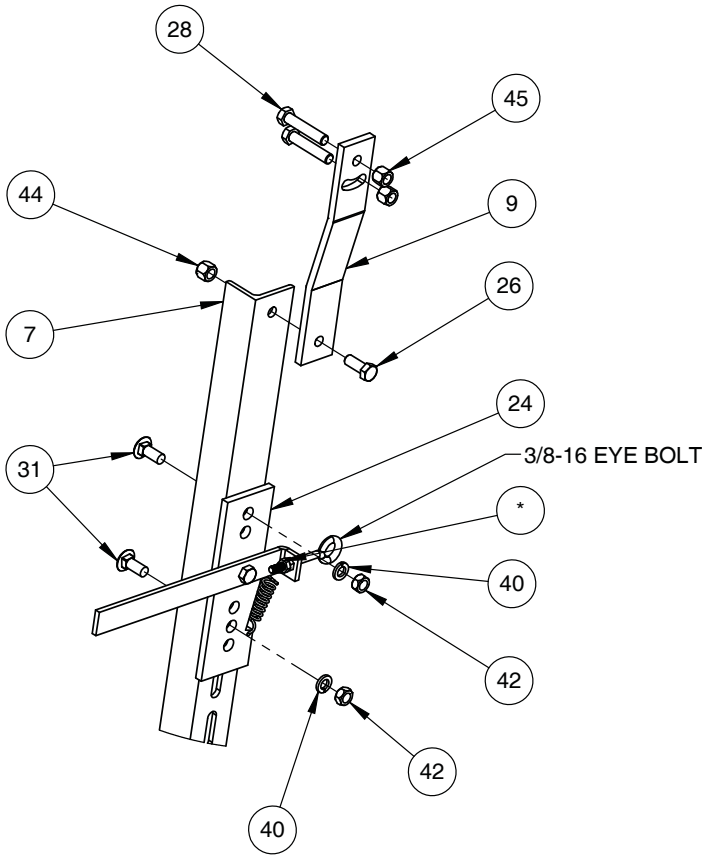
DETAIL - I



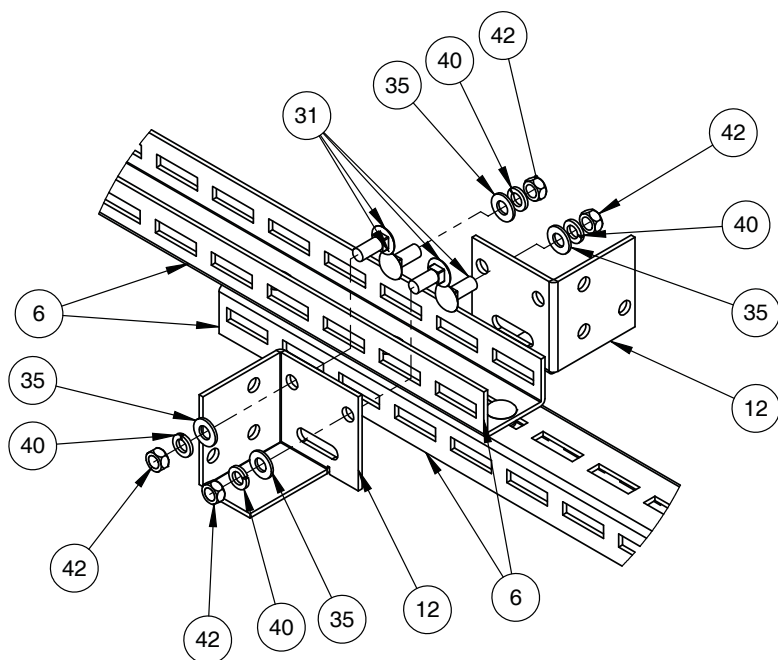
DETAIL - J



DETAIL - K



DETAIL - L



DETAIL - M

# FALSE CAR 1500 lb. Capacity

## Parts List



ITEM NO.	QTY.	PartNo	DESCRIPTION
1	2	11-300-01	SIDE STILE
2	2	11-300-02	PLATFORM ANGLE - 1500#
3	2	11-300-03	ADJUSTABLE GUIDE ANGLE
4	2	11-300-04	FIXED GUIDE ANGLE
5	8	11-300-05	ZEE BRACKET
6	4	11-300-06	ADJUSTABLE CROSS CHANNEL
7	2	11-300-07	LIFT ANGLE
8	4	11-300-08	DIAGONAL BRACE (FALSE CAR)
9	2	11-300-09	LIFT BAR
10	2	11-300-10	TENSION BRACKET
11	2	11-300-11	SAFETY RETRACTION BAR
12	2	11-300-12	JOIST BRACKET
13	2	11-300-13	SAFETY RETRACTION SPRING
14	2	11-300-15	TAPPED PLATE
15	2	11-300-16	1/8" SPACER
16	2	11-300-17	1/2" SPACER
17	2	11-300-18	FORK
18	2	11-300-19	KNURLED ROLLER
19	2	11-300-20	L-ROD
20	2	11-300-21	SAFETY COVER PLATE
21	1	11-300-24	SAFETY PAWL ASSEMBLY
22	2	11-301-22	RETAINING PLATE 1500 #
23	2	11-301-23	SAFETY BLOCK 1500 #
24	4	13003	1/4-20 X 3/4" HHCS Z
25	18	13105	3/8-16 X 1" HHCS Z
26	26	13207	1/2-13 X 1 1/4" HHCS Z
27	4	13221	1/2-13 X 4 1/2" HHCS Z
28	2	14213	1/2-13 X 2 1/2" HHCS GR. 8
29	4	17210	1/2-20 X 1 3/4" HHCS GR. 5 Z
30	16	21817	3/8-16 X 1" CARRIAGE BOLT GR. 5 Z
31	14	21823	1/2-13 X 1 1/4" CARRIAGE BOLT GR.5 Z
32	12	24225	1/4-20 X 1" FHSS CS
33	4	29049	#10-32 X 1/2" PAN HEAD SCREW Z
34	18	33082	3/8" DIA. FLATWASHER Z
35	16	33086	1/2" DIA. FLATWASHER Z
36	16	33334	1/2" BEVELED WASHER PLAIN
37	4	33614	#10 SPRING LOCKWASHER Z
38	4	33618	1/4" SPRING LOCKWASHER Z
39	16	33622	3/8" SPRING LOCKWASHER Z
40	38	33626	1/2" SPRING LOCKWASHER Z
41	20	36306	3/8-16 HEX NUT Z
42	34	36310	1/2-13 HEX NUT Z
43	16	37024	3/8-16 HEX NUT NYLON INSERT Z
44	10	37030	1/2-13 HEX NUT NYLON INSERT NE Z
45	2	37559	1/2-13 HEX NUT NYLON INSERT GR 8 Z
46	2	64251	1/4 DIA. X 1 1/2" LG. SPRING PIN



Notes...

***FALSE CAR* 1500 lb. Capacity**



Notes...

**wurtec**

6200 Brent Drive, Toledo, Ohio | Ph: 800.837.1066 | Buy Online! [wurtec.com](http://wurtec.com)